

UNSHIELDED SMD POWER INDUCTORS / FPI TYPE

FEATURES

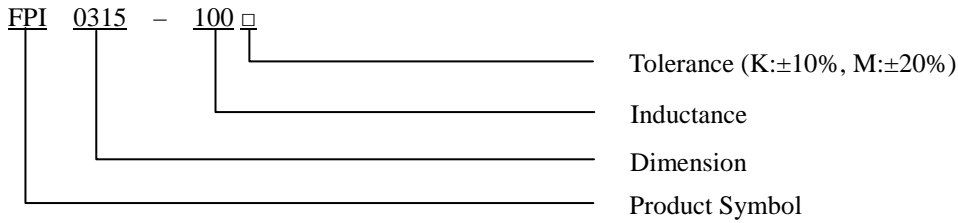
- ◆ Silver Plated Type
- ◆ High power and high saturation
- ◆ Ideal inductors for DC/DC conversion



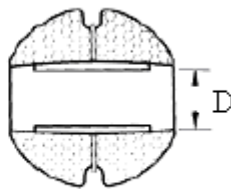
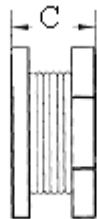
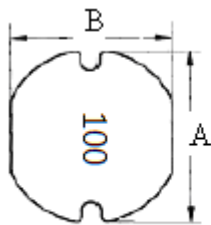
APPLICATIONS

- ◆ Power supply for VTRs.
- ◆ Portable communication equipment.
- ◆ Notebook PCs.
- ◆ LCD televisions.
- ◆ DC/DC converters, etc.

ORDERING CODE



DIMENSIONS (UNIT: mm)



A	3.3 ± 0.3	m/m
B	3.0 ± 0.3	m/m
C	1.5 ± 0.3	m/m
D	1.0 (REF)	m/m

UNSHIELDED SMD POWER INDUCTORS / FPI TYPE

ELECTRICAL CHARACTERISTICS FOR FPI0315

Part No.	Inductance (uH)	RDC (Ω)	IDC (A)
FPI0315-1R0 □	1.0	0.060	3.20
FPI0315-2R2 □	2.2	0.100	2.20
FPI0315-3R3 □	3.3	0.150	1.80
FPI0315-4R7 □	4.7	0.170	1.55
FPI0315-5R6 □	5.6	0.210	1.30
FPI0315-6R8 □	6.8	0.230	1.10
FPI0315-8R2 □	8.2	0.260	1.00
FPI0315-100 □	10	0.300	0.90
FPI0315-150 □	15	0.560	0.80
FPI0315-470 □	47	1.500	0.50
FPI0315-101 □	100	3.100	0.30

* 100uH 以上 Test Frequency : 1KHZ/1V

* 100uH 以下 Test Frequency : 2.52MHZ/1V